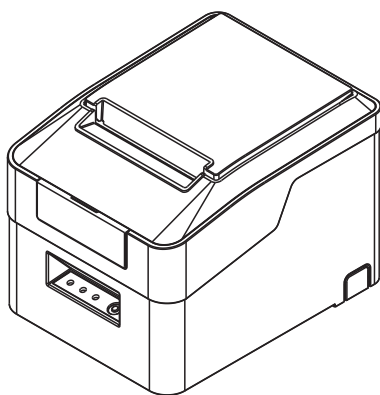




User's Manual

GP-U80160I THERMAL RECEIPT PRINTER



Proficient in Commercial POS Receipt Printers

1.Safety Notice:

- * Don't touch the printer head with anything.
- * Don't touch the cutter blade.
- * Don't bend the power cord excessively or place any heavy objects onto it.
- * Don't use the printer when it is out of order. This can cause a fire or and electrocution.
- * When connecting or disconnecting the plug, always hold the plug but not the cord.
- * Keep the desiccant out of children's reach.
- * Use only approved accessories and do not try to disassemble, repair or remodel it by yourself.
- * Install the printer on the stable surface. Choose firm, level surface where avoid vibration.
- * Don't let water or other foreign objects into the printer.
- * Don't connect a telephone line into the peripheral drive connector.
- * We recommend that you unplug the printer from the power outlet if no use it for a long period .

2. Applications:

- * POS system Receipts
- * EFT POS system Receipts
- * Gym, post, hospital, civil aviation system Receipts
- * Inquiry, Service system Receipts
- * Instrument test Receipts
- * Tax, Tab Receipts

3. Unpacking

After unpacking the unit, check that all the necessary accessories are included in the package.

User's Manual	1 PCS
Printer	1 PCS
Data Cable	1 PCS
Power Adapter (include power cord)	1 SET

4. Features

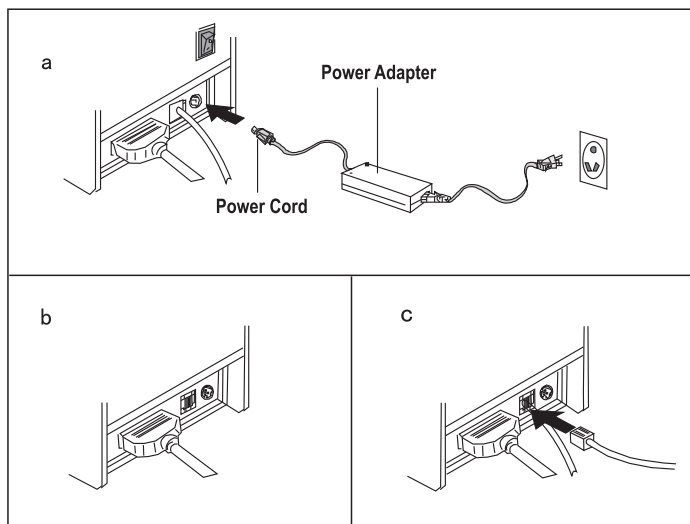
- * 160mm/sec high-speed printing
- * High print quality
- * Low working noise
- * Support cashdrawer kick-out
- * Easy maintenance
- * Various interface available (Parallel, Serial, USB,Bluetooth)
- * Built-in data buffer
- * Support character enlargement, bold, underline, line spacing and character spacing
- * Low energy consumption and low operation cost
- * Compatible with ESC/POS command set
- * Character per line and character set can be set by DIP switches
- * Support Ethernet Printing status monitor, multiple connection printing and OPOS printing
- * Support printer identification, software binding and high-speed driver mode
- * Support paper end detection

5. Specifications

Model	GP-U80160I
Printing speed	160mm/sec
Printing width	79.5±0.5mm
Dot pitch	576dots / line&512dots / line
Character size	ANK Character, Font A: 12×24dots, Font B: 9×17dots, Chinese Character: 24×24dots
Print command	Compatible with ESC/POS
Interface	Parallel/Serial/USB/Bluetooth
Auto cutter	Partial
Reliability print	150Km
Barcode mode	UPC-A/UPC-E/JAN13(EAN13)/ JAN8(EAN8)/CODE39/ITF/CO DABAR/CODE93/CODE128
Paper thickness	0.06~0.08mm
Power adapter	Input: AC110V~220V, 50~60HZ Output: DC 24V/2A
Powersupply	DC 24V/2A
Cash drawer	DC 24V/1A
Work temperature	Temperature: 0~45℃, Dampness: 10~80%
Storage temperature	Temperature: -10~60℃, Dampness: 10~90%
Dimensions	135×170×115MM(W×D×H)

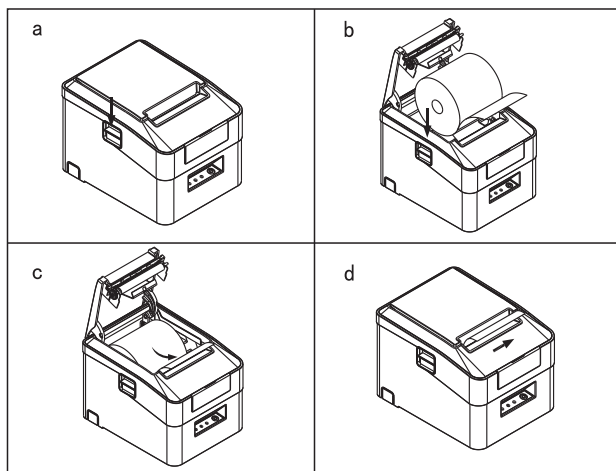
6. Printer Connection

- Plug the DC cord connector into the printer's power connector.
- Plug the data cable connector into the printer's interface connector.
- Plug the drawer cable into the drawer kick-out connector on the back of the printer next to the interface connector.



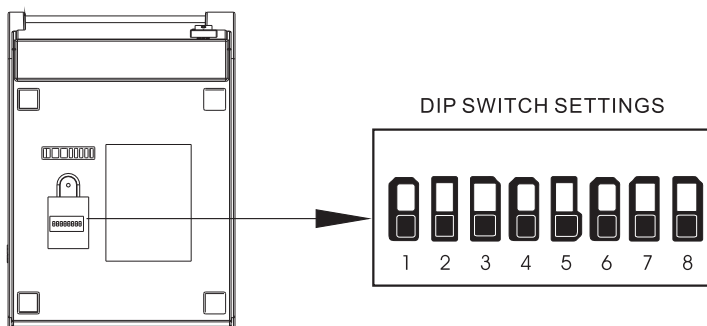
7. Installing the roll paper

- Open the printer cover.
- Install the roller in the roll paper, and put them into the printer.
- Pull out some paper outside the printer.
- Close the top cover. Press the printer cover to avoid error position of roll paper.



8. Setting the Printing Mode (DIP switches)

The DIP switches are used to set the printer to perform various functions, such as cutter mode, character set, speed, beeper, print density and etc.



DIP Switch Functions

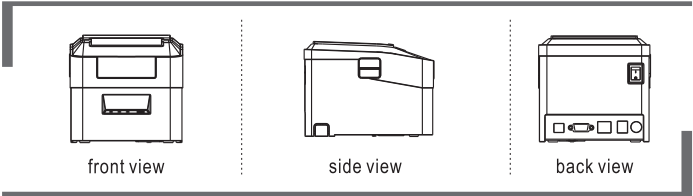
Switchch	Function	ON	OFF	Default
SW-1	Select cutter	No	Yes	OFF
SW-2	Select beeper	Yes	No	OFF
SW-3	Print density	Dark	Light	OFF
SW-4	Two-byte character code	No	Yes	OFF
SW-5	Character per line	42	48	OFF
SW-6	Cutter with cash drawer	Yes	No	OFF
SW-7	Select Baud rate			OFF
SW-8	Select Baud rate			OFF

SW-7	SW-8	Baudrate(bps)
ON	ON	38400
OFF	ON	115200
ON	OFF	9600
OFF	OFF	19200

NOTE: Before configure the DIP switch settings, please first turn the printer power off and remove the paper roll.

(*) Baud Rate is only available for serial interface models

9. Printer view

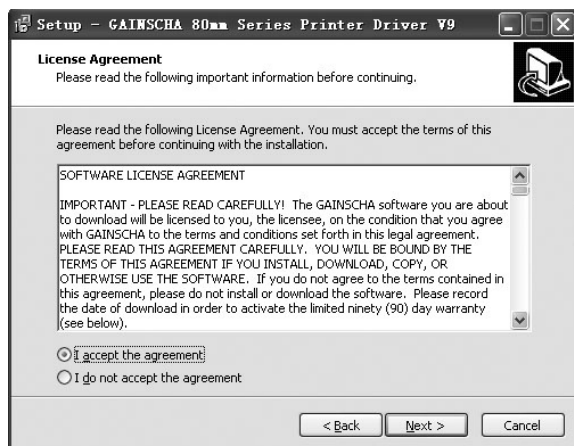


10. Driver Installation

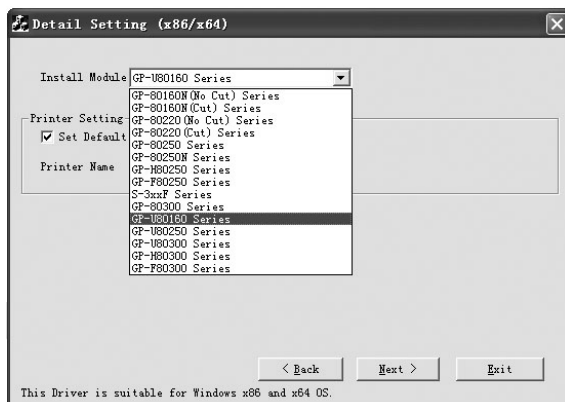
- a. Insert the driver CD disk, run the GP80DRV CN V8 to set up.



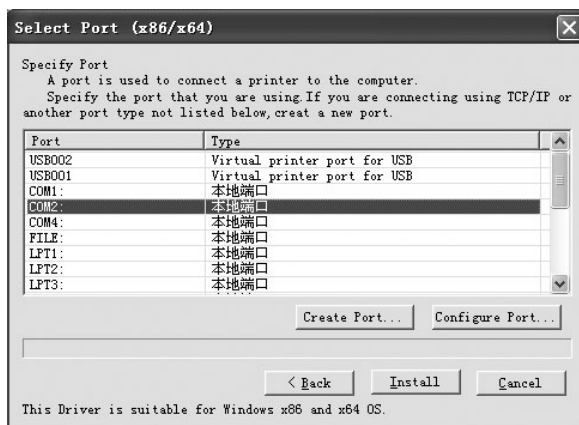
- b. Read and accept the terms to continue the setup



- c. Select GP-U80160 Series to continue.



- d. Select the corresponding printer port.



 **WARNING:**

All rights reserved. No part of this publication may be reproduced, stored in a retrieval, or transmitted in any form or by any means, electronic, mechanical, photocopying, recording, or otherwise, without the prior written permission of Gainscha (Hong Kong) International Limited. The company reserves the rights of modifications of manufacture technology, assembly, software and hardware without notice. Contact your franchiser if you need further information about the product.

